

# Your guided tour of childcare changes

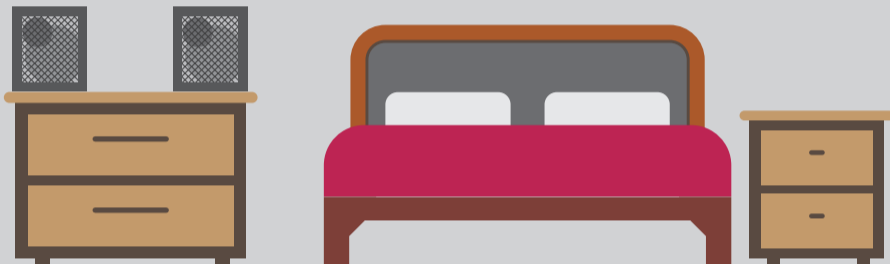
Tax-Free Childcare is due to begin rolling out in early 2017. The existing Childcare Voucher Scheme will close to new entrants in April 2018.

## Sodexo

A reputation for reliability. With over 10 years' experience of running Childcare Voucher Schemes, Sodexo is a financially stable provider who you can rely on.

### Don't forget older children

Parents can claim for children up to the age of 12 with Tax-Free Childcare, but up to 15 years of age with the current Childcare Voucher Scheme.



### Parents get extra savings with employer run childcare vouchers

Members of Sodexo's Childcare Voucher Scheme receive exclusive special offers on holidays, childcare and family days out, helping working families save more.

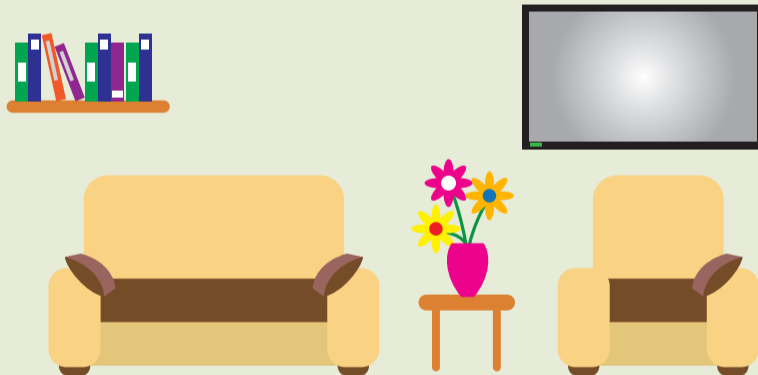


### Time is running out

Parents who take childcare vouchers now will have the choice between the two schemes when Tax-Free Childcare comes into effect. Act now and start saving!

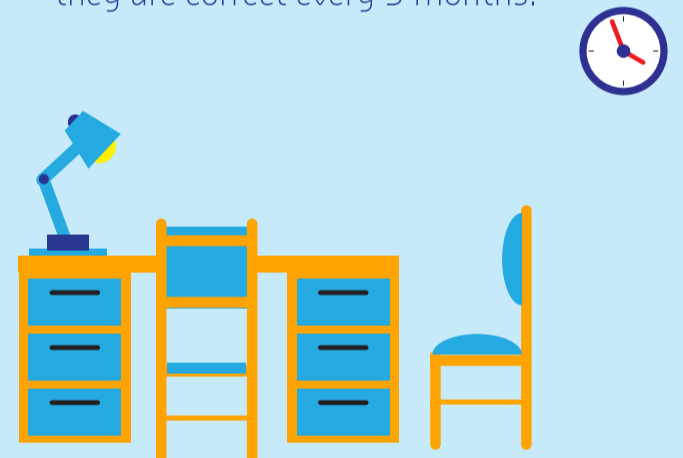
### Salary sacrifice could help child benefit

Salary sacrifice schemes can allow you to replace taxable earnings with non-taxable benefits such as childcare vouchers. If this reduces your salary to less than £50K you will be entitled to full child benefits.



### Parents administer Tax-Free Childcare rather than their employer

Parents will need to update their details or confirm they are correct every 3 months.



### Eligibility

There are certain requirements that parents need to meet to be eligible for Tax-Free Childcare. Parents should check these before they consider switching schemes.



### 66% of parents are better off with childcare vouchers

In a survey of more than 5,000 working parents, 66% are better off with childcare vouchers than they would be with Tax-Free Childcare.



## Sign up now to start saving

For more information on the changes to childcare vouchers and how you could be affected, visit [www.tax-free-childcare.info](http://www.tax-free-childcare.info)

Contact us at [customercare.br.uk@sodexo.com](mailto:customercare.br.uk@sodexo.com) or call us on 0800 3287411